



Investing in Southeast Texas



About our company

Sempra Infrastructure's vision is to deliver energy for a better world. Every day, our mission to be North America's leading energy infrastructure company comes to life through our values of doing the right thing, championing people, and shaping the future. Our more than 2,300 employees develop, build, and operate energy infrastructure that is expected to play a crucial role in the energy systems of the future, while prioritizing sustainability, innovation, world class safety, resilient operations, and social responsibility.

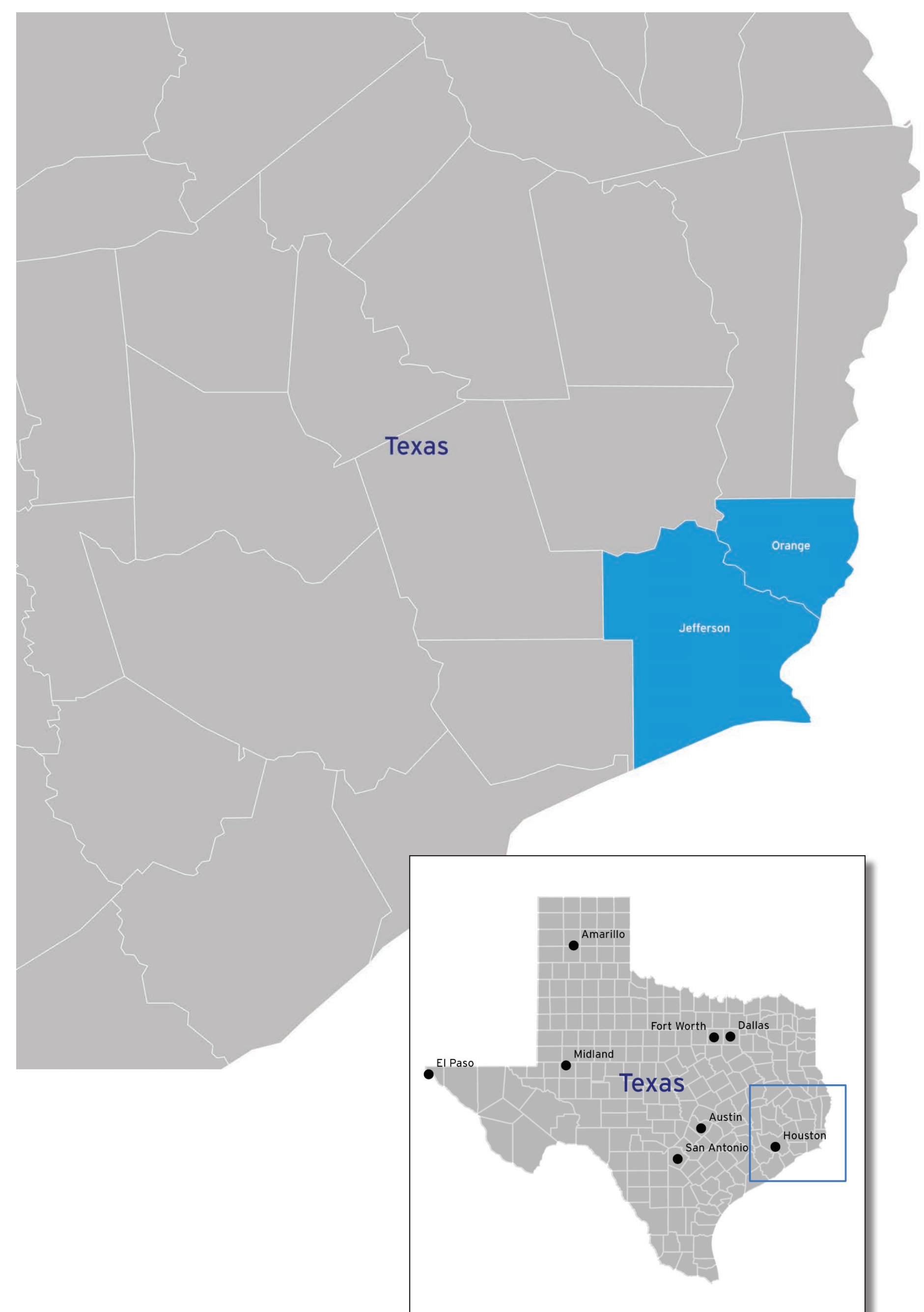
Facilities in development in Southeast Texas

Texas Connector Pipeline

The proposed Texas Connector Pipeline is a 31-mile natural gas pipeline in Southeast Texas that will link Port Arthur LNG in Sabine Pass, Texas to several intrastate and interstate pipelines that transport natural gas from production areas. The pipeline facilities also include a compressor station located west of Orangefield, Texas.

Port Arthur LNG

Port Arthur LNG is being built to meet the growing demand for safe, sustainable, and reliable natural gas around the world. It is located in Sabine Pass, Texas on the Sabine-Neches ship channel. Currently under construction, Phase 1 of Port Arthur LNG will be capable of exporting approximately 13 million tonnes per annum (Mtpa) of LNG. Phase 2 of the project, which is currently under marketing and development, could add an additional 13 Mtpa of export capacity to the facility.



About Texas Connector Pipeline



About Texas Connector Pipeline

The proposed Texas Connector Pipeline is a 31-mile natural gas pipeline in Southeast Texas. This pipeline will link the Port Arthur LNG terminal in Sabine Pass to several intrastate and interstate gas pipelines that transport natural gas from production areas. The pipeline facilities include the proposed Orangefield Compressor Station, located west of Orangefield, Texas. The pipeline is certificated by the Federal Energy Regulatory Commission (FERC) for a capacity of approximately 2.5 billion cubic feet per day, and would serve the proposed Port Arthur LNG Phase 2 project.

The proposed Texas Connector Pipeline includes the following elements:

- The Orangefield Compressor Station will consist of two compressor buildings, an administrative building and support structures, and graveled areas
- The northern segment, a 29.6 mile, 42-inch diameter natural gas pipeline running from the Orangefield Compressor Station to Port Arthur LNG
- The southern segment, a 1.4 mile, 42-inch diameter natural gas pipeline connecting Port Arthur LNG to a meter station in Sabine Pass, Texas
- Five laterals to interconnected pipelines, with a meter station at each interconnect

Permit updates

The Texas Connector Pipeline originally received FERC approval in 2019. An amendment has been submitted to FERC for approval, which includes the following modifications:

- Reducing the southern segment of the pipeline to a 1.4-mile pipeline that does not cross into Louisiana and reversing the direction flow, allowing for interconnection downstream of Port Arthur LNG.
- Reducing the number of compressor stations, from two to one. The remaining proposed facility, formerly known as the Northern Compressor Station, will be located west of Orangefield, Texas. The amendment proposes to rename the facility to the Orangefield Compressor Station and will include additional compression capacity to account for the removal of the Southern Compressor Station
- Modifying the northern segment of the pipeline to incorporate landowner alignment requests.
- Reducing the number of meter stations and laterals.

About the Orangefield Compressor Station

Meeting growing needs of customers

The proposed Orangefield Compressor Station, located west of Orangefield, Texas, will help move approximately 2.5 billion standard cubic feet per day of feed gas along the proposed Texas Connector Pipeline to the proposed Phase 2 expansion of the Port Arthur LNG facility.

Once operational, the Orangefield Compressor Station will consist of two compressor buildings, an administrative office and support structures, parking areas, internal roads, and graveled areas.

Facility details

The company proposes to build four gas compressor units at the Orangefield Compressor Station.

Specific components of the project include:

- Four natural gas turbine driven compressors
- Two compressor buildings to house the gas turbine units
- One administrative building and one warehouse
- Below and aboveground piping
- A backup generator and additional compressor supporting equipment
- Two meter stations within the Orangefield Compressor Station footprint

Construction is estimated to take approximately 20 months, subject to weather and equipment delivery. Workforce for the project is anticipated to be approximately 820 workers at peak construction.



Project timeline:

February 2017 - Initiated pre-filing process with FERC for original project

April 2019 - Received FERC approval for original project

August 2024 - Filed Amendment with FERC

Q2 2026 - Expected start of construction

Texas Connector Pipeline

Efforts to ensure minimal impact to the environment and the community

Project will meet or exceed the U.S. Department of Transportation Federal Safety Standards



Temporary or short-term impacts during construction

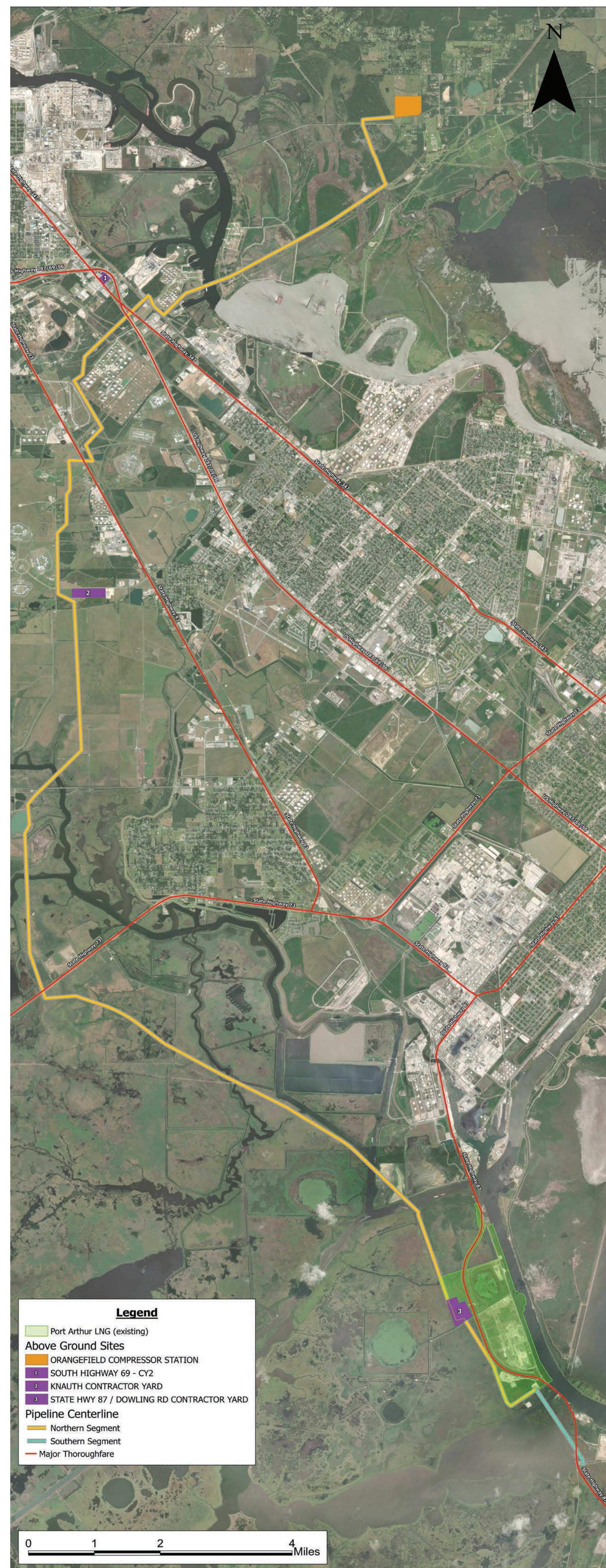
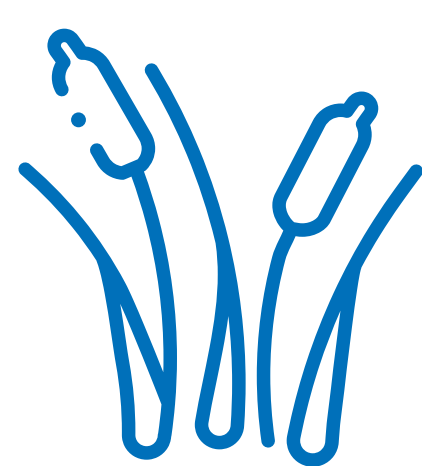
- Proposed laydown yards and temporary access roads located along the length of the pipeline route
- Robust environmental plan to mitigate any erosion and sedimentation from the construction area
- Peak construction workforce of 820 over a 13 month period with the potential for a 24-hour schedule

Air and noise modeling indicate no significant impacts

- The proposed project will meet National Ambient Air Quality Standards for air quality in the region
- Will meet compliance standards for noise.



Minimal permanent wetlands impacts.



NO IMPACTS to critical habitat or threatened or endangered species

Texas Connector Pipeline Project Benefits

The Texas Connector Pipeline will help bolster the local economy. Benefits will include:

New jobs

The Texas Connector Pipeline project is estimated to support a peak construction workforce of 820 personnel. In addition, an estimated 10 full-time, permanent positions will be created.



Economic benefits

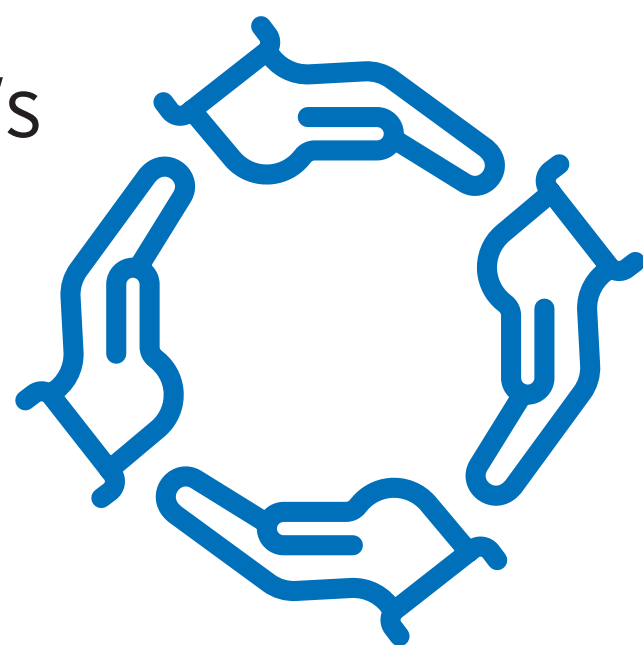
The project will have positive economic benefits for Jefferson and Orange Counties through:

- A new revenue source for local providers of goods and services
- Generation of state and local property taxes from operation of new facilities
- Support of local community organizations to enhance local hiring and vendor opportunities



Community investment

Through Sempra Infrastructure's Community Partnership Program, the company will continue to partner with local non-profits, schools, and other organizations to make investments in programs and services that enhance the quality of life in our communities.



OUR COMMITMENT

At Port Arthur LNG, we are dedicated to supporting efforts that help address and meet community needs. We do this by actively pursuing partnerships with diverse nonprofit and community-based organizations to implement sustainable initiatives that contribute to creating pathways to employment opportunities, enabling access to programs and services that keep our communities safe and healthy, and promote environmental stewardship and sustainability. We aim to create a positive, long-term growth impact and enhance community resiliency.

Since the development of the Port Arthur LNG project began in 2015, we have dedicated more than \$3 million to support Jefferson County communities. In 2023, Bechtel Energy invested another \$100,000 in workforce readiness initiatives in Port Arthur. Together, we are energizing community partners to meet diverse needs, enhance the quality of life, and bolster training and skills development to attract, retain and engage talent in the region.

OUR PRIORITY AREAS

In 2023, Port Arthur LNG made more than **\$595,000** in social investments to **89 nonprofit and community organizations**. Another **\$140,000** in social investments were made by Sempra Infrastructure, the company developing Port Arthur LNG. Investments were made in four focus areas.

Focus Area	Investment
Education and Workforce Readiness	\$326,000
Emergency Preparedness and Community Safety	\$207,000
Economic Prosperity and Leadership Development	\$110,725
Environmental Stewardship and Sustainability	\$52,000*

*An additional \$30,000 of materials were given in-kind by Port Arthur LNG to support environmental stewardship and sustainability initiatives in Sabine Pass.

Our Community Partners

100 Black Men of Greater Beaumont • 100 Plus Black Women Beaumont • American Red Cross - SETX • Arrow Child and Family Ministries • Art Museum of SETX • Bethel Temple • Big Thicket Association • Boys' Haven • Camp SeaPort • Charlotte's Cupboard • Chosen Generation • Christian Faith Women of Virtue • Christus • Ducks Unlimited • Fit Lab Foundation • Foster a Friend Foundation • Friends of Sea Rim State Park • Girls' Haven • Golden Triangle Audubon Society • Golden Triangle Business Roundtable • GraceHub • Greater Beaumont Chamber of Commerce • Greater Orange Chamber of Commerce • Greater Port Arthur Chamber of Commerce • Greater Port Arthur Precinct #4 • Gift of Life • Lamar State College - Port Arthur • Land Manor • Leadership Southeast Texas • Legacy Community Health - Life Church • Linda's Fund • Port Arthur Higher Education Foundation • Port Arthur Historical Society • Orange County Disaster Recovery • Top Ladies of Distinction • Port Arthur Education Foundation • Guts & Hoses Benevolent Club of Nederland • Rotary Club of Port Arthur • Sabine Pass Education Foundation • Sabine Pass ISD • Port Arthur ISD • Port Arthur Sertoma Club • Rock Outreach Center • Rotary Sister 2 Sistah • SETX Economic Development Foundation • SETX Food Bank • St. Paul United Methodist Church • Samaritan Counseling Center • SETX Veterans & Veterans • Shorley Care Network • Triangle Community Outreach • Ubi Caritas • United Board of Mission • Village of Faith Ministries • Veterans of Foreign Wars • Willie Carter Outreach Center • WPCA of SETX

PARTNER SPOTLIGHTS

EDUCATION AND JOB PREPAREDNESS

We champion people by investing in their growth and development, empowering innovation and creativity, and celebrating accomplishments. Through our partnerships with local schools, we help grow our future leaders and workforce.

Partner Highlight:
Students create a safe place for an endangered species
 Monarch butterflies have long graced the skies of Texas during their annual migration. A steady decline in their population has placed them on the International Union for the Conservation of Nature's Red List of endangered and threatened species. As part of a grant award to Thomas Jefferson Middle School, students designed and launched a new Monarch Habitat and Conservation Center on campus, creating a safe and thriving place for the monarch butterfly in their community.

ENVIRONMENTAL STEWARDSHIP AND SUSTAINABILITY

As part of our commitment to the environment, we work in partnership with organizations to improve sustainability in urban and natural ecosystems. We support projects and programs that preserve and protect wildlife habitats, restore coastal beach and wetland areas and support community beautification.

Partner Highlight:
Rebuilding marine habitat in Sabine Pass
 Port Arthur LNG was one of the initial corporate partners in the Sabine Pass Artificial Reef Program launched in 2019 with Texas Parks and Wildlife, the Coastal Conservation Association (CCA) of Texas and Friends of Sabine Pass. Through this effort, an area largely devoid of any life is now burgeoning with life. This partnership will expand in 2024 with the creation of a second, deep-water artificial reef. These efforts positively impact marine ecosystems, enhance recreational fishing and promote tourism, and stimulate economic growth and investment with local businesses.

EMERGENCY PREPAREDNESS AND COMMUNITY SAFETY

At Port Arthur LNG, safety is a core value. We are committed to partnering with local organizations that provide critical programs and services helping to keep our communities healthy and safe.

Partner Highlight:
Spreading the love to those less fortunate
 In this year's End Hunger campaign, Port Arthur LNG employees and project contractors teamed up to collect peanut butter and jelly for the Catholic Charities Hospitality Center of Southeast Texas snack bag program. The "Spread the Love" drive resulted in the collection of more than 550 pounds of peanut butter and jelly, enabling the Hospitality Center to distribute more than 600 sandwiches weekly. Annually, the organization serves more than 40,000 meals through its efforts.

COMMUNITY OUTREACH | (855) 410-4785 | PortArthurLNG.com | PortArthurLNG

Port Arthur LNG is a development of Sempra Infrastructure, a subsidiary of Sempra. ©2024 Sempra Infrastructure. All copyright and trademark rights reserved. Printed on recycled paper.

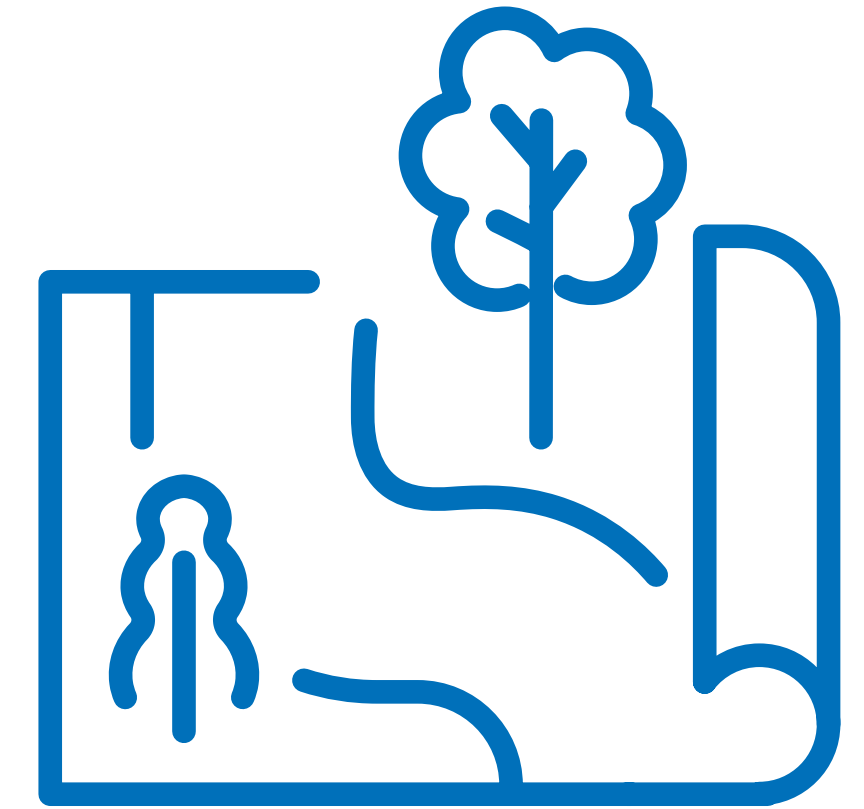
Environmental and Safety

Project footprint

The Orangefield Compressor Station will be located on a parcel of land west of Orangefield, Texas along State Highway 105 and S Mansfield Ferry Road. The Texas Connector Pipeline right-of-way will proceed southwest under the Sabine River, cut across the industrial corridor between Beaumont and Port Arthur, turn south around the west side of Port Arthur, and then east to connect with Port Arthur LNG on TX-87.

As part of the Texas Connector Pipeline Project:

- The Orangefield Compressor Station will be located on 82.4 acres
- Approximately 120 acres will be temporarily used for laydown yards for construction areas along the pipeline route
- Temporary access roads will be utilized as an access to the laydown yards and compressor station site during construction



Project approvals

The company will submit project information to all relevant governing agencies for approval or consultation. These permits and/or approvals will be secured prior to advancement of the Texas Connector Pipeline project.

These agencies include, but are not limited to:

- Federal Energy Regulatory Commission (FERC)
- United States Army Corps of Engineers (USACE)
- United States Fish and Wildlife Service (USFWS)
- National Oceanic and Atmospheric Administration (NOAA) Fisheries
- Texas Commission on Environmental Quality (TCEQ)
- Texas Railroad Commission (RRC)
- Texas Historical Commission (THC)
- Texas Parks and Wildlife Department (TPWD)

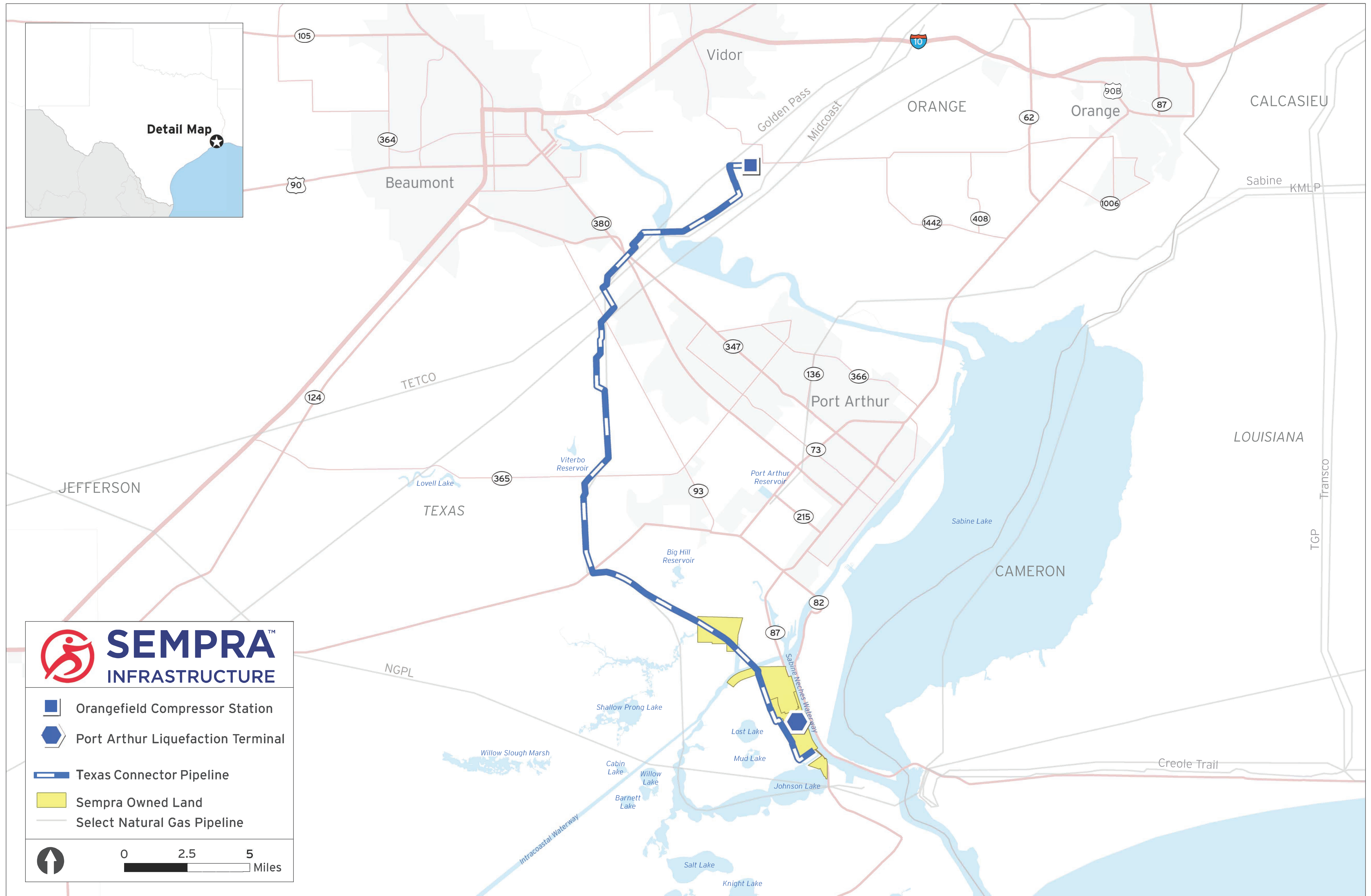


Commitment to environmental stewardship and safety

At Sempra Infrastructure, we are committed to responsible environmental stewardship and strive to do the right thing by working to minimize or mitigate any impacts of our operations.

We also put the health, safety, and security of our workforce, customers, and communities at the center of everything we do. We're invested in being an industry leader and accomplish this by championing health, safety, and security programs that protect our people, projects, operations, and communities. We reinforce a safety-first culture for our employees and contractors.





- Orangefield Compressor Station
- Port Arthur Liquefaction Terminal
- Texas Connector Pipeline
- Sempra Owned Land
- Select Natural Gas Pipeline

